



Bobcat

One Tough Animal

DIESEL FORKLIFTS

NX-Series, Pneumatic, 2.5 to 3.8-ton capacity

🌐 MEA & CIS



ONE TOUGH ANIMAL

► OUR MISSION

We empower operators to accomplish more, while working in the toughest conditions and tightest situations. When our customers have the will, we provide the way.



► BOBCAT'S HISTORY

In 1958, the Melroe Manufacturing Company introduced a compact front-end loader that quickly evolved into the M400, the world's first true skid-steer loader. The company soon adopted what became the world famous 'Bobcat' brand — and its success paved the way for the global compact equipment industry we see today.

► YEARS OF EXPERIENCE

In 2021, Bobcat furthered its reach by acquiring Doosan Industrial Vehicle, increasing its capacity to provide customers with comprehensive business solutions. With Doosan's expertise in material handling and warehouse equipment dating back to its inaugural forklift in 1968, the company has established a global presence, with 400 dealers across 93 countries.



► BOBCAT TODAY

Now, with a diversified portfolio that includes forklifts and warehouse equipment, Bobcat serves as a one-stop solution for intralogistics needs, from loading shipping containers to optimizing warehouse operations. Made according to the highest manufacturing standards, Bobcat's material handling machines offer the precision and durability customers expect.



TOUGH, AGILE & SAFE

► UNMATCHED VALUE

The NX-Series combines entry-level accessibility with incredible power, reliability, and operator comfort, ensuring outstanding value for your investment.



► 2 OPTIONS, ONE RELIABLE PERFORMANCE

Choose between 2 efficient engine power options with strong, consistent performance and fuel efficiency for smooth operation and dependable power, all day long.
P. 6–7



► CONFIDENCE IN COMFORT

Tackle longer shifts with ease and confidence, supported by an intuitive instrument panel, adjustable seat, compact steering wheel, and a roomy cab.
P. 8–9



► OUTSTANDING SAFETY

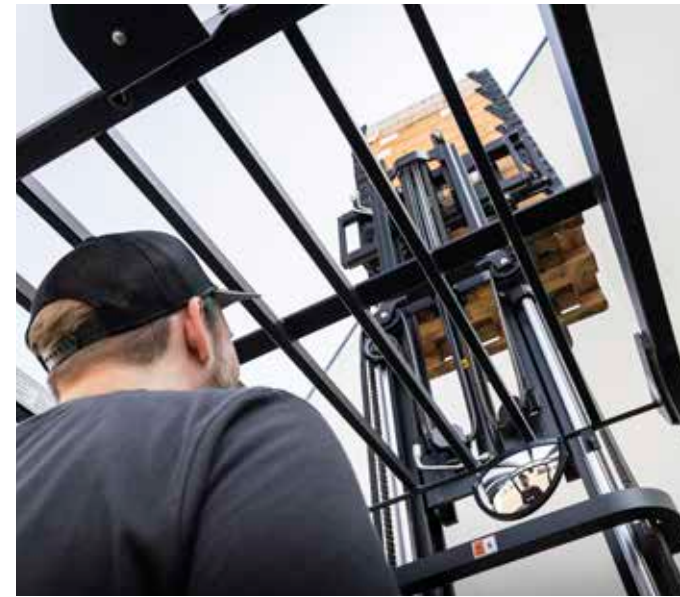
With safety features like tilt cylinders below floor plate, back-up alarm, and a reliable parking brake, operators can enjoy an even safer ride.
P. 10–11



► BUILT TO LAST

The NX-Series is designed for reliability with features like improved airflow, engine safeguards, reduced vibration levels, and heavy-duty technologies. Count on Bobcat power to go the distance.
P. 12–13

OUTSTANDING PRODUCTIVITY



► REACH HIGHER, ACHIEVE MORE

Thanks to the powerful hydraulic system—featuring an improved gear pump and mast regulator valve—your truck reaches new heights, boosting efficiency and productivity, especially in high-speed operations.



► LIFT BIGGER

Get more stability with our new auxiliary weight. This feature lowers the truck's center of gravity, allowing it to lift bigger and stronger in heavy-duty applications.



► NAVIGATE IMPOSSIBLE SPACES

Enjoy working in places where others cannot! Thanks to a small turning radius, you can maneuver in and out of the tightest spots with ease.



► ELEVATED PERFORMANCE

The combination of a robust engine, advanced transaxle, and innovative frame structure has optimized gradeability, allowing operators of the NX-Series to confidently scale steep slopes of up to 24% grade.

COMFORT & CONTROLS



► MORE ACCESSIBILITY

Designed with operator comfort and convenience in mind, the cab layout makes smart use of space to support a smooth, comfortable ride. Enjoy the benefits of a compact steering wheel, accompanied by an adjustable steering column and suspension seat.



► MORE LEG ROOM

By repositioning the tilt cylinder and increasing knee clearance, our trucks provide more leg room for improved operator comfort.



► EFFORTLESS CONTROL

A compact steering wheel with a knob makes it easy to maneuver, control, and operate.

► SIMPLIFIED OPERATION

The powerful headlights deliver clear, focused illumination, while the seamlessly integrated switches ensure effortless operation.

► EASY ENTRY



Our trucks are designed with operator comfort in mind with low step height, a large entry bar, and a step plate enhanced with anti-slip tread.

► ENHANCED COMFORT



To enhance comfort further, the steering column has been moved to the left for a more natural driving posture. The instrument panel is now positioned to the right for better visibility.

► SEE MORE, WORK BETTER



By lowering the cowl height (~40 mm) and tweaking the counterweight design, our NX-Series offers improved front and rear visibility for safer driving conditions.



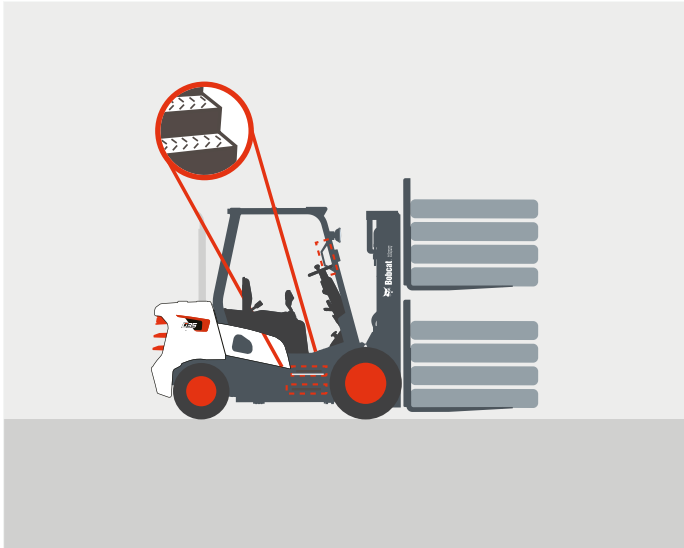
SAFETY IN EVERY MOVE

▶ **ADVANCED PROTECTION FOR YOU AND YOUR OPERATION**

Bobcat forklifts have safety embedded in their DNA. Packed with tons of features that protect your well-being and investment, these machines give you peace of mind in every task, every day.

▶ **ANTI-SLIP STEP & ENTRY BAR**

The anti-slip step and entry bar offer peace of mind when getting on and off the vehicle.



▶ **AUXILIARY WEIGHT**

Enhanced stability and reduced vibrations increase the lifespan of the machine thanks to the new auxiliary weight located at the back of the truck.



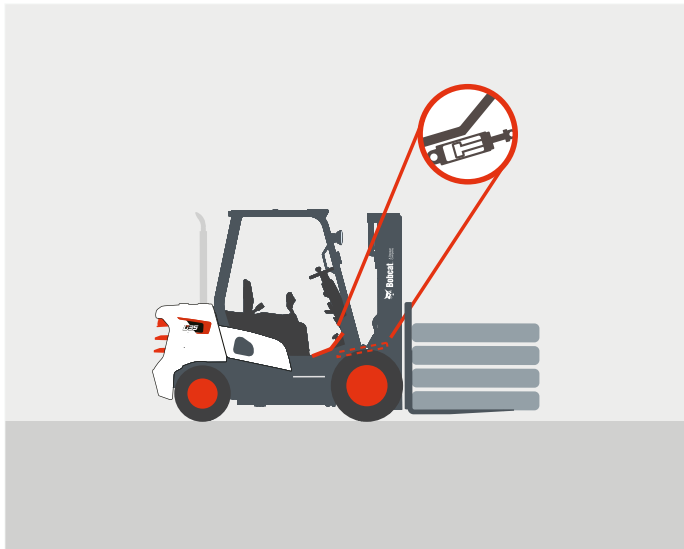
▶ **BACKUP ALARM**

The backup alarm emits a warning signal when the operator is driving in reverse, alerting those in the nearby vicinity.



▶ **TILT CYLINDERS BELOW THE FLOOR PLATE**

With the tilt cylinders tucked below the floor plate, the mast area stays uncluttered, sightlines improve, and hoses and hardware are shielded from impacts and debris—reducing snag risks and keeping handling smooth and consistent.



▶ **PEDESTRIAN ALERTS**

The blue safety light projects onto the floor around the truck, alerting pedestrians to the approaching vehicle.



▶ **OPTIMIZED MAST VISIBILITY**

A wide inner mast, along with neatly routed chains and hoses, offers the operator a clearer view of both the load and surroundings. This thoughtful design helps with precise load placement, reduces operator strain, and enables more confident handling.



▶ **A PANORAMIC VIEW**

Providing greater visibility of the rear working area, the large panoramic mirror improves safety while adding to overall productivity.



▶ **ILLUMINATE YOUR WORKPLACE**

The LED lights illuminate even the darkest corners of your workplace, keeping you safe and aware of your surroundings.



BUILT TO LAST

► NO JOB TOO TOUGH

Made for robust performance in heavy-duty and dusty environments, the NX-Series forklifts offer anti-dust design, and a pre-cleaner. They also boast features like vented side panels, engine guard, and heavy-duty cooling for optimal functionality.



**THERE'S NO TIME
FOR DOWNTIME.
STAND UP TO EVERY TASK
THAT COMES YOUR WAY,
DAY AFTER DAY.**

2 YEAR WARRANTY

► WARRANTY

Bobcat develops every machine to the highest standards of quality and durability. That's why our standard warranty provides 24 months or 2 000 operating hours (whichever occurs first) of coverage.



► PROTECTION PLUS EXTENDED WARRANTY

Enjoy total peace of mind with Protection Plus extended warranty. Providing the same level of protection as the standard warranty, Protection Plus also reflects different customer needs and expectations by offering a choice of durations and annual operating hours.

► EXTENSIVE DEALER NETWORK

You can rely on our network of dealers and service partners who are always ready to help you.

► BOBCAT GENUINE PARTS

Quality components delivered to our dealers guarantee that all of our equipment is built to last, withstand the toughest conditions, and provide reliable performance.

MAIN SPECIFICATIONS

TECHNICAL DATA ACCORDING TO VDI 2198					
CHARACTERISTICS		Unit	D20NX	D25NX	D30NX
Transmission type			power shift		
Drive			diesel		
Operator type			seated		
Load capacity	Q	kg	2 000	2 500	3 000
Load center	c	mm	500		
Load distance: center of driveaxle to fork	x	mm	467		
Wheelbase	y	mm	1 700		
Service weight		kg	3 635	3 920	4 370
TIRES					
Tread, front	b11	mm	1 060		
Tread, rear	b12	mm	980		
DIMENSIONS					
Tilt of mast / fork carriage forward / backward	α / β		6 / 10		
Height, mast lowered ¹	h1	mm	2 053		
Free lift ¹	h2	mm	150		
Lift (with STD 2-stage mast) ¹	h3	mm	3 000		
Height, mast extended ¹	h4	mm	4 280		
Height of overhead guard	h6	mm	2 160		
Height of seat	h7	mm	1 185		
Overall length	l1	mm	3 610	3 660	3 715
Length to forkface	l2	mm	2 560	2 610	2 665
Overall width	b1 / b2	mm	1 290		
Fork dimensions	s / e / l	mm	45 × 100 × 1 050		
Fork carriage width	b3	mm	1 032	1 046	
Ground clearance, loaded, below mast	m1	mm	132		
Ground clearance, center of wheelbase	m2	mm	135		
Aisle width for pallets 1 000 × 1 200 crossways	Ast	mm	3 970	4 020	4 110
Aisle width for pallets 800 × 1 200 lengthways	Ast	mm	4 230	4 270	4 310
Turning radius	Wa	mm	2 300	2 350	2 430
PERFORMANCE DATA					
Travel speed, with / without load		km/h	19.5 / 21	19.5 / 21	19.5 / 21
Lift speed, with / without load		mm/s	560 / 600		
Lowering speed, with / without load		mm/s	485 / 560		
Drawbar pull, with / without load (@ 1.6 km/h)		kg	1 628 / 1 574	1 608 / 1 567	1 585 / 1 555
Max. drawbar pull, with / without load		kg	1 927 / 1 837	1 907 / 1 830	1 882 / 1 818
Gradeability, with / without load (@ 1.6 km/h)		%	30.2 / 48	25.9 / 43.6	22 / 37.9
Max. gradeability, with / without load		%	36.4 / 58.6	31 / 52.8	26.4 / 45.6
Service brake			foot / hydraulic		
COMBUSTION ENGINE					
Engine manufacturer / type			Quanchai / CR 4C2-50C43		
Engine power according to DIN ISO1585		kW	36.7		
Rated speed		min-1	2 500		
Torque at 1/min		Nm/rpm	175 / 1 800		
Cycle / number of cylinders / displacement		-/cm³	4 / 4 / 2 850		
Battery voltage / normal capacity		V/Ah	87		

Specification values quoted in this specification sheet have been rounded. Performance may vary depending on operating conditions. Products and specifications are subject to improvement and change without prior notice.

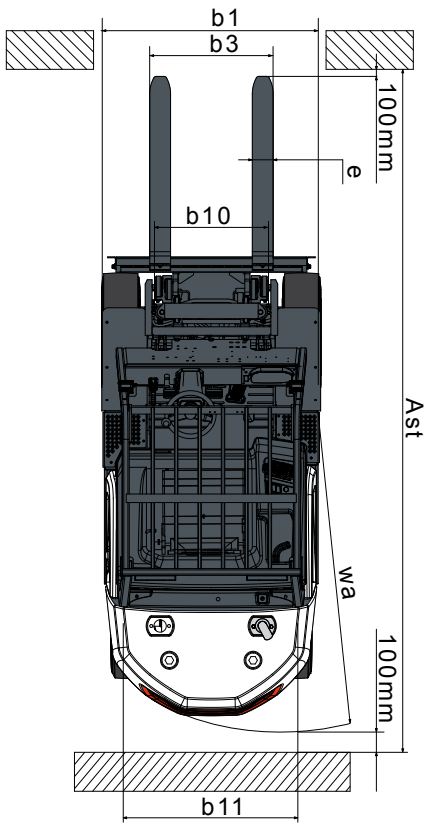
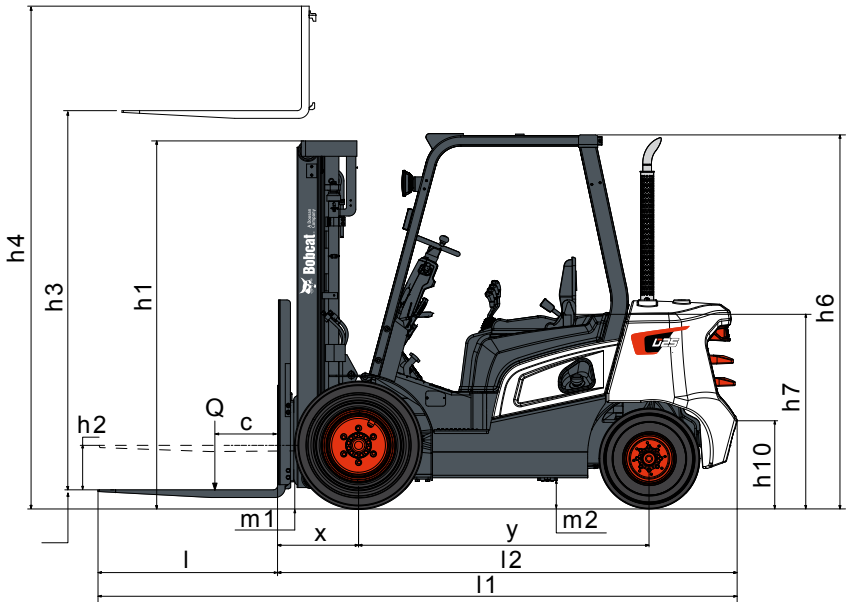
¹ Mast dimensions refer to a range from the lowest to highest available mast with load backrest.

Note: Load capacities are based on the standard chassis without side shifter.

MAIN SPECIFICATIONS

TECHNICAL DATA ACCORDING TO VDI 2198						
CHARACTERISTICS		Unit	D35NX		D38NX	
Transmission type			power shift			
Drive			diesel			
Operator type			seated			
Load capacity	Q	kg	3 500		3 800	
Load center	c	mm	500			
Load distance: center of driveaxle to fork	x	mm	472			
Wheelbase	y	mm	1 750			
Service weight		kg	4 620		4 900	
TIRES						
Tread, front	b11	mm	1 060			
Tread, rear	b12	mm	980			
DIMENSIONS						
Tilt of mast / fork carriage forward / backward	α / β		6 / 10			
Height, mast lowered¹	h1	mm	2 053			
Free lift¹	h2	mm	150			
Lift (with STD 2-stage mast)¹	h3	mm	3 000			
Height, mast extended¹	h4	mm	4 280			
Height of overhead guard	h6	mm	2 160			
Height of seat	h7	mm	1 185			
Overall length	l1	mm	3 800		4 000	
Length to forkface	l2	mm	2 750		2 950	
Overall width	b1 / b2	mm	1 290			
Fork dimensions	s / e / l	mm	50 × 122 × 1 050			
Fork carriage width	b3	mm	1 046			
Ground clearance, loaded, below mast	m1	mm	132			
Ground clearance, center of wheelbase	m2	mm	135			
Aisle width for pallets 1 000 × 1 200 crossways	Ast	mm	4 180		4 430	
Aisle width for pallets 800 × 1 200 lengthways	Ast	mm	4 400		4 680	
Turning radius	Wa	mm	2 500		2 550	
PERFORMANCE DATA						
Travel speed, with / without load		km/h	19.5 / 21		19.5 / 21	
Lift speed, with / without load		mm/s	460 / 490		520 / 500	
Lowering speed, with / without load		mm/s	410 / 460			
Drawbar pull, with / without load (@ 1.6 km/h)		kg	1 564 / 1 548		1 549 / 1 538	
Max. drawbar pull, with / without load		kg	1 861 / 1 810		1 846 / 1 802	
Gradeability, with / without load (@ 1.6 km/h)		%	19.5 / 35.1		17.8 / 32.2	
Max. gradeability, with / without load		%	23.4 / 42		21.4 / 38.5	
Service brake			foot / hydraulic			
COMBUSTION ENGINE						
Engine manufacturer / type			Quanchai / CR 4C2-50C43		Quanchai / CR 4C2-50C43	
Engine power according to DIN ISO1585		kW	36.7		36.7	
Rated speed		min-1	2 500			
Torque at 1/min		Nm/rpm	175 / 1 800		175 / 1 800	
Cycle / number of cylinders / displacement		-/cm³	4 / 4 / 2 850		4 / 4 / 2 850	
Battery voltage / normal capacity		V/Ah	87		87	

DIMENSIONS



STANDARD EQUIPMENT & OPTIONS

STANDARD EQUIPMENT & OPTIONS	
	NX TRUCKS
SAFETY & STABILITY	
Back-up alarm	✓
Rear grab bar with horn	✓
Spark arrestor	•
Rear safety light(s)	•
Static ground strap	•
Strobe light	•
PRODUCTIVITY	
Auxiliary weight	✓
Power shoe brakes	✓
High-powered, fuel-efficient engine	✓
Quick disconnect hose couplings	•
RELIABILITY	
Mast with JJ beam	✓
Anti-dust overhead guard	✓
Single element air cleaner	✓
Pre-cleaner	•
Vented side panel	•

*This list is based on factory data. Standard or optional can vary for specific countries.

• = option ✓ = standard – = not available

STANDARD EQUIPMENT & OPTIONS	
	NX TRUCKS
SERVICEABILITY	
Toolless side panel	✓
Toolless floor plate	✓
Hood locking cylinder	✓
Centralized junction box	✓
Separate brake oil reservoir with indicator	•
Tool kit	•
Tool bag	•
OPERATOR COMFORT (ERGONOMICS)	
Clear front / rear / mast visibility	✓
LED combination lights	✓
Entry grab bar	✓
Anti-slip step plate	✓
Panoramic mirror	✓
Integrated lamp switch	✓
Compact steering wheel with steering knob	✓
Clip board	✓
Modular cab – type A, B, C	•
Full cab (with heater)	•
Cup holder	•
USB port	•
Operator fan	•



Compact steering wheel with steering knob



Anti-slip step plate



LED combination lights



Auxiliary weight



Quick disconnect hose couplings



Rear grab bar with horn



BUILT FOR EVERY JOB. READY FOR YOUR WORLD.

340 MACHINES / 150 ATTACHMENT FAMILIES / 1 TOUGH ANIMAL



**SKID-STEER
LOADERS**



**COMPACT TRACK
LOADERS**



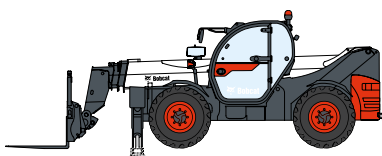
**BACKHOE
LOADERS**



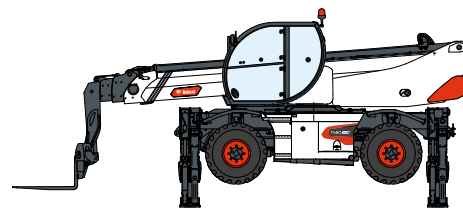
**COMPACT
EXCAVATORS**



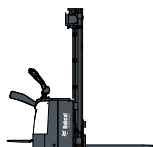
FORKLIFTS



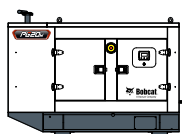
TELEHANDLERS



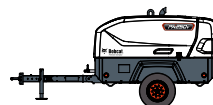
ROTARY TELEHANDLERS



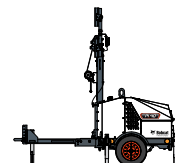
**WAREHOUSE
EQUIPMENT**



GENERATORS



**AIR
COMPRESSORS**



**LIGHTING
SYSTEMS**



**SMALL ARTICULATED
LOADERS**



**MINI TRACK
LOADERS**



**LIGHT COMPACTION
EQUIPMENT**



ATTACHMENTS

DOOSAN

Bobcat is a Doosan Company. Doosan is a global leader in construction equipment, power & water solutions, engines, and engineering proudly serving customers and communities for more than a century. | Bobcat and the Bobcat logo are registered trademarks of Bobcat Company in the United States and various other countries. ©2025 Bobcat Company. All Rights Reserved.

www.bobcat.com

©2025 BOBCAT B4503620-EN (12-25)



Bobcat

Doosan Bobcat EMEA, U Kodelky 1810, 263 12 Dobříš, Czech Republic